

UCB - Heathcock Hall College of Chemistry NEWSLETTER



January 17, 2025 - Vol 9

TOP NEWS



In Pimentel B18, we've installed a new 2" sanitary sewer pipe a new 4" acid waste pipe, cutover the new wet and dry standpipes, and demolished a small portion of the slab for the new sink location.

We are in the process of demolishing a portion of the Pimentel Plaza slab around the existing and future air intake. At the future air intake, we've poured the North and West Plaza stem walls, allowed the concrete to cure, and we tied in existing waterproofing to the new stem wall.



At Latimer Hall Interiors Levels 2, 3, and 4, we've installed metal stud framing, fire taped partition walls, and new doors in preparation for upcoming demolition of the Link bridge. For everyone's safety, the containments at Latimer Hall 3 and 4 are not active exits and are for construction personnel only.

In preparation for the upcoming installation of interim stairs, we've installed new shaft wall assemblies and doors at the following North and South side classroom balconies: 220, 221, 224, 225, 320, 321, 322, 430A, 430B, 420J.



Progress at the Future Air Intake

Upcoming Site Activities

View schedule in more detail on page 2

- Pimentel B18 Panel P Shutdown
- Demolition of Remaining Air Intake Structure
- Cutovers for the new Domestic Water and Fire Water Services
- Preparation of Drill Pads and Drill Rig Mobilization

High Potential for Lab Disruption

January 2025 Schedule

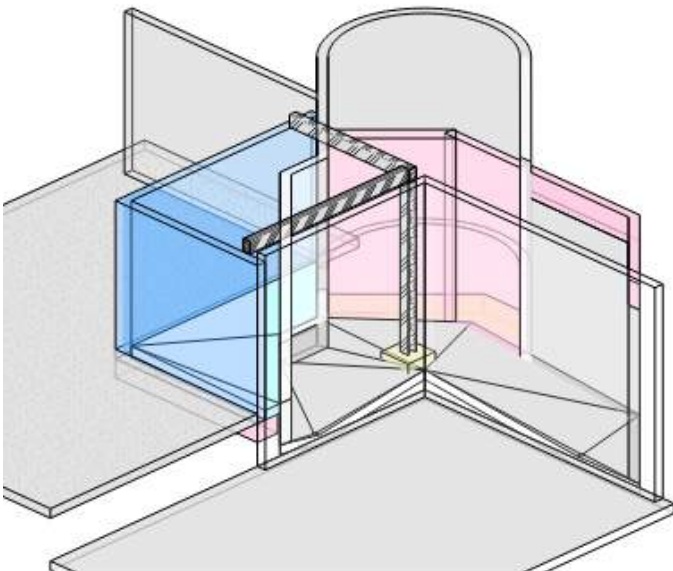
Areas of Work

Latimer Hall Air Intake

Physics Space B18 and Adjacent Rooms

Sitework and Utilities

University Ave down to Pimentel Plaza and Surrounding Area of Existing Air Intake



Electrical Shutdown

Pimentel B18

Panel P Shutdown (1 Hour Duration with Temporary Power Provided)

Date: [1/17/25 4:00-5:00 pm]

Latimer Hall - Air Intake Work

Demolish Existing Plaza Slab Above Air Intake, Existing Concrete Wall, and Remaining Air Intake Structure

Dates: [1/23/25-2/4/25]

High Impact

Sitework & Utilities Work

Rough In: 6" Domestic Water, Fire Water, Backflow Preventers, Testing, Inspections, Demolition of Existing Domestic Water and Fire Water Lines

Dates: [1/22/25-2/3/25]

Medium Impact

Relocation of the New Fire Department Connection and Demolition of Existing

1/21/25-1/22/25]

Medium Impact

Preparation of Drill Pads and Mobilizing Drill Rig

1/27/25-2/11/25]

High Impact

Demolition and Vibration Equipment Being Used (Potential Lab and Equipment Impacts)



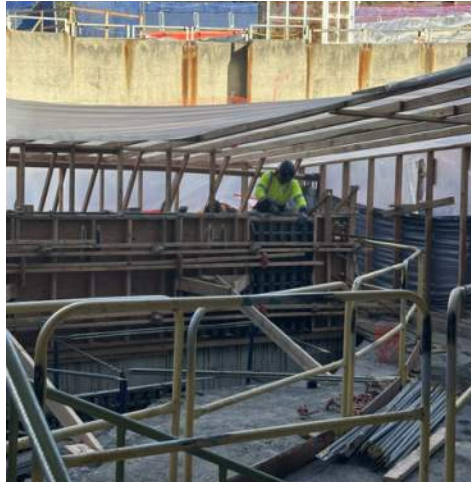
Low Impact



Medium Impact



High Impact



Progress Photos at the Existing and Future Air Intake

Project Milestones

- Air Intake Relocation - April 2025
- Egress Stairs at Latimer Hall - April 2025
- Lewis and Latimer Connecting Link - May 2025
- Make Ready Phase Complete - June 2025
- Retaining Wall Complete - July 2025
- Start Structural Steel - October 2025
- Start Exterior Facade - January 2026
- Structural Top Out - February 2026
- Exterior Skin Complete - June 2026
- Elevators Operational - August 2026
- Street Improvements Complete - August 2026
- Phase 2 Complete - March 2027

Noise Forecast

- 01/20/25-01/24/25: Noise Level - Medium
- 01/27/25-1/31/25: Noise Level - Medium
- 02/03/25-02/07/25: Noise Level - Medium
- 02/10/25-03/14/25: Noise Level - Medium
- 02/17/25-02/21/25: Noise Level - Medium

Questions or Concerns

Kyle Gibson

Director of Communications
UC Berkeley
(510) 495-5786

Please see the following:

Scheduled Work Near Labs Google Sheet