

UCB - Heathcock Hall College of Chemistry NEWSLETTER



December 24, 2024 - Vol 8

TOP NEWS



Merry Christmas and Happy Holidays!

In the existing air intake space, we've installed a protection wall and started demolition of the adjacent plaza slab. In the future air intake space, we've formed and poured the North and West plaza beam sides and soffit.

At the Latimer Hall classroom balconies, we've installed metal stud framing and cement plaster assembly. Within the interiors, we've installed partition walls, conducted electrical safe off and installed new exit signs in preparation for abatement and demolition of the Link.

Upcoming Site Activities

View schedule in more detail on page 2

- Demolition of the Concrete Wall above the Existing Air Intake
- Below Grade Foundation and 14" Concrete Wall for the Exterior Walls and Temporary Shoring for Slab Replacement
- Preparing Drill Rig Pad and Mobilizing Drill Rig



Progress of the Future Air Intake

High Potential for Lab Disruption

Areas of Work

Latimer Hall Air Intake

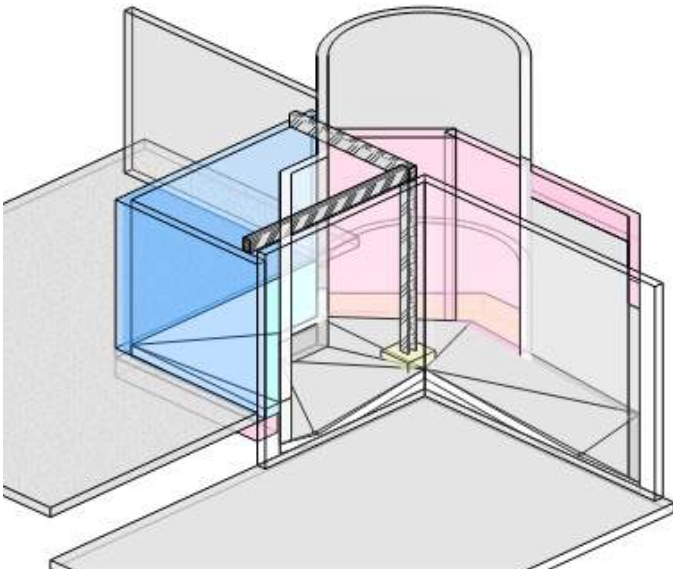
Physics Space B18 and Adjacent Rooms

Sitework and Utilities

University Ave down to Pimentel Plaza and Surrounding Area of Existing Air Intake

Latimer Hall Interior

Levels 2, 3, and 4 at the Link and Balconies



- Overall Project Completion: 5%

December 2024 Schedule

Latimer Hall - Air Intake Work

Demolish Existing Plaza Slab Above Air Intake and Concrete Wall

Dates: [12/24/24-12/31/24]

Medium Impact

Below Grade Foundation

Dates: [1/6/25-1/21/25]

Medium Impact

Steel Column Footings

Dates: [1/2/25-1/20/25]

Medium Impact

14" Concrete Wall

Dates: [1/2/25-2/6/25]

Medium Impact

Sitework & Utilities Work

Mobilize Soil Nail Drill Rig

Dates: [12/27- 01/02] - Day Shift

Medium Impact

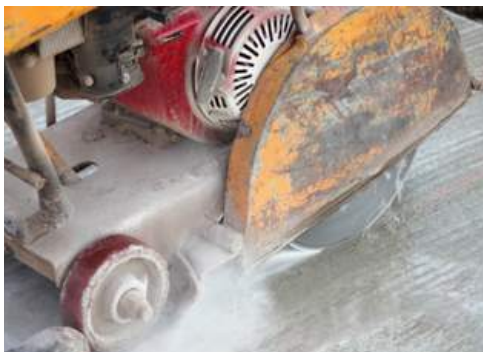
Latimer Hall Interior Classrooms

Installing Partition Walls Levels 2, 3, & 4

Dates: [12/17-1/27]- Shift work

Low Impact

Demolition and Vibration Equipment Being Used (Potential Lab and Equipment Impacts)



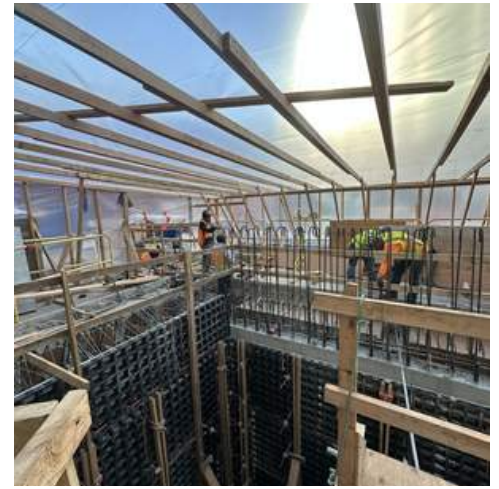
Low Impact



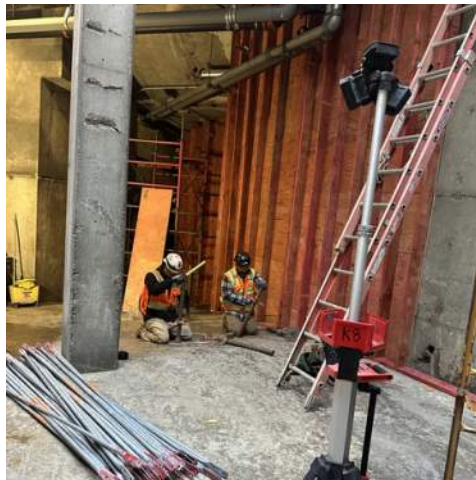
Medium Impact



High Impact



Progress Photos Above the Plaza Slab of the Future Air Intake



Protection Wall at the Existing Air Intake and Metal Stud Framing Installation at Latimer Hall

Project Milestones

- Air Intake Relocation - April 2025
- Egress Stairs at Latimer Hall - April 2025
- Lewis and Latimer Connecting Link - May 2025
- Make Ready Phase Complete - June 2025
- Retaining Wall Complete - July 2025
- Start Structural Steel - October 2025
- Start Exterior Facade - January 2026
- Structural Top Out - February 2026
- Exterior Skin Complete - June 2026
- Elevators Operational - August 2026
- Street Improvements Complete - August 2026
- Phase 2 Complete - March 2027

Noise Forecast

- 12/23-12/27: Noise Level - Low
- 12/30-01/03: Noise Level - Medium
- 01/06-01/10: Noise Level - Medium
- 01/13-01/17: Noise Level - Medium
- 01/20-01/24: Noise Level - Medium

Questions or Concerns

Kyle Gibson

Director of Communications
UC Berkeley
(510) 495-5786

Please see the following:

Scheduled Work Near Labs Google Sheet