

UCB - Heathcock Hall College of Chemistry NEWSLETTER



September 30, 2024 - Vol 4

TOP NEWS



Please note: The sidewalks pictured along University Drive and Gayley Road are closed. For your safety, please use the sidewalks across the street.

While preparing to implement a new path of egress at Lewis Hall, we sawcut a new opening at the ground floor, in preparation for demolition of the Link bridge between Latimer and Lewis Hall.

We've also been conducting utility shutdowns and have been relocating mechanical, electrical, plumbing, and fire sprinkler utilities in Physics Space B18.

Upcoming Site Activities

View schedule in more detail on page 2

- Installing new door, hardware, and lighting at new Lewis Hall opening.
- Relocating utilities below Pimentel Plaza to make way for the new air intake structure.
- Relocating site utilities to make way for the main building shoring wall.
- Starting demolition and concrete structures for the new air intake.
- Preparing to build our new temporary access ramp through site grading and realigning the site fence line.



High Potential for Lab Disruption

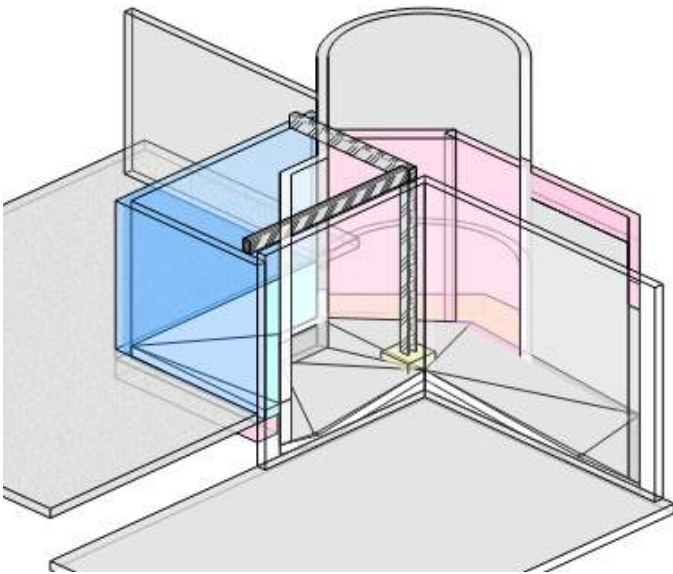
Areas of Work

Latimer Hall Air Intake

Physics Space B18 and Adjacent Rooms

Sitework and Utilities

Water Line from University Ave down to Pimentel Plaza and Surrounding Area of Existing Air Intake



- Main Building Construction Begins in December 2024
- Overall Project Completion: <5%

October 2024 Schedule

Latimer Hall - Air Intake Work

Install Protection Wall & Shores in B-18

Dates: 10/7/24 - 10/11/24

- Low Impact

Concrete Saw Cutting & Jackhammer Demolition of Plaza Slab for Air Intake

Dates: 10/15/24 - 10/18/24 [Night Shift]

- Medium Impact

Concrete Saw Cutting & Jackhammer Demolition of Basement Slab for Air Intake

Dates: 10/21/24 - 10/24/24 [Night Shift]

- Medium Impact

Pimentel Plaza - Sitework & Utilities Work

300 Excavator Transporting Dirt along Gayley Road & University Drive to Create Ramp Access to Plaza

Dates: 9/30/24 - 10/11/24

- Low Impact

Mini Excavator Digging Trenches from University Drive to Center of Plaza

Dates: 9/30/24 - 10/11/24

- Low Impact

Trench Compaction

Dates: 10/14/24 - 10/18/24

- Low Impact

Demolition and Vibration Equipment Being Used (Potential Lab and Equipment Impacts)



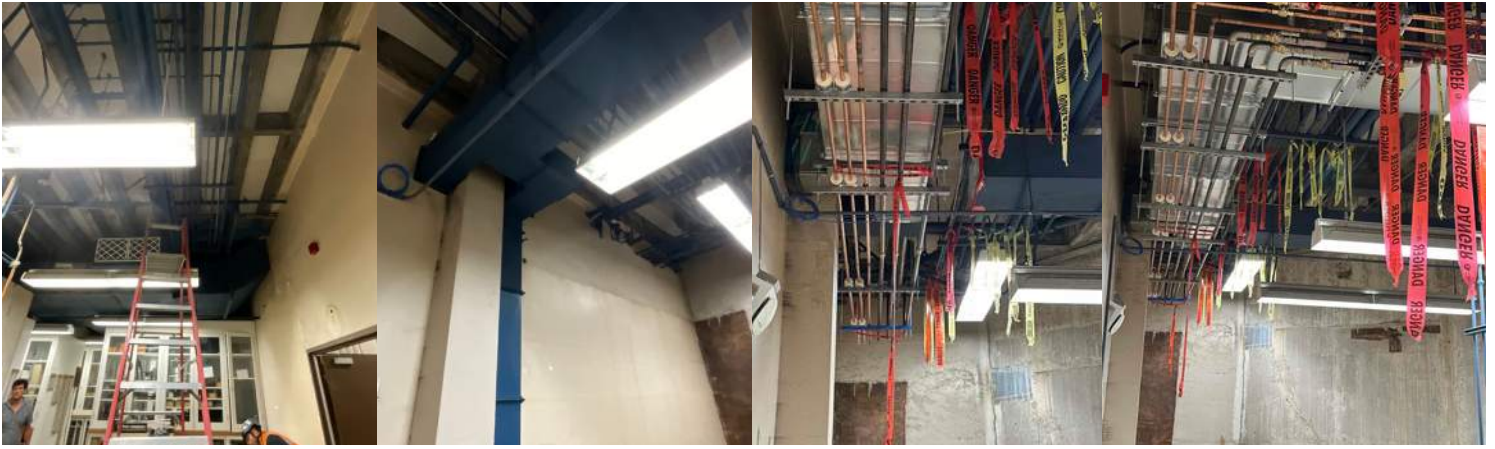
Low Impact



Medium Impact



High Impact



Physics Space B18 Before and After MEPF Overhead Utility Relocations



Lewis Hall Ground Floor Before and After New Sawcut Opening

Project Milestones

- Air Intake Relocation - April 2025
- Egress Stairs at Latimer Hall - April 2025
- Lewis and Latimer Connecting Link - May 2025
- Make Ready Phase Complete - June 2025
- Retaining Wall Complete - July 2025
- Start Structural Steel - October 2025
- Start Exterior Facade - January 2026
- Structural Top Out - February 2026
- Exterior Skin Complete - June 2026
- Elevators Operational - August 2026
- Street Improvements Complete - August 2026
- Phase 2 Complete - March 2027

Noise Forecast

- 09/30-10/04: Noise Level (1-10) - Medium
- 10/07-10/11: Noise Level (1-10) - Medium
- 10/14-10/18: Noise Level (1-10) - High
- 10/21-10/25: Noise Level (1-10) - High
- 10/28-11/01: Noise Level (1-10) - Medium

Questions or Concerns

Kyle Gibson

Director of Communications

UC Berkeley

(510) 495-5786