

UCB - Heathcock Hall College of Chemistry NEWSLETTER



February 14, 2025 - Vol 10

TOP NEWS



We've demolished selective plaza slab at Pimentel Plaza, half of the existing concrete wall and metal grating, and part of the structural concrete slab around the existing air intake. For utilities at the existing air intake, we've demolished the old 4" WSP and 6" DSP, cutover these new utilities, and passed hydro inspections. In the supply fan room, we've started another round of replacing the supply fan air filters.



Across the site, we've installed cathodic protection and backfilled around the WSP, DSP, and FDC. We've excavated for and installed the new 6" FW and 6" DW lines and are working on cutting over these new utilities. Additionally, we've been drilling and installing our temporary soldier beams.

Air Intake Progress Photos



Within the interiors of Latimer Hall, we've painted the demising door, frames, and walls within the corridors. In Physics Space B18, we've stripped construction side soffit formwork and have weatherproofed around the future air intake at the plaza level. We are preparing to build back the Physics B18 space.

Upcoming Site Activities

- View schedule in more detail on page 2*
- Excavating and Installing Soldier Beams Lagging - Lifts A and B
 - Air Intake: Below Grade Foundation, Steel Column Footings and 14" Wall for the Vertical Structure
 - Tower Crane Micropiles and Tiebacks

High Potential for Lab Disruption

February 2025 Schedule

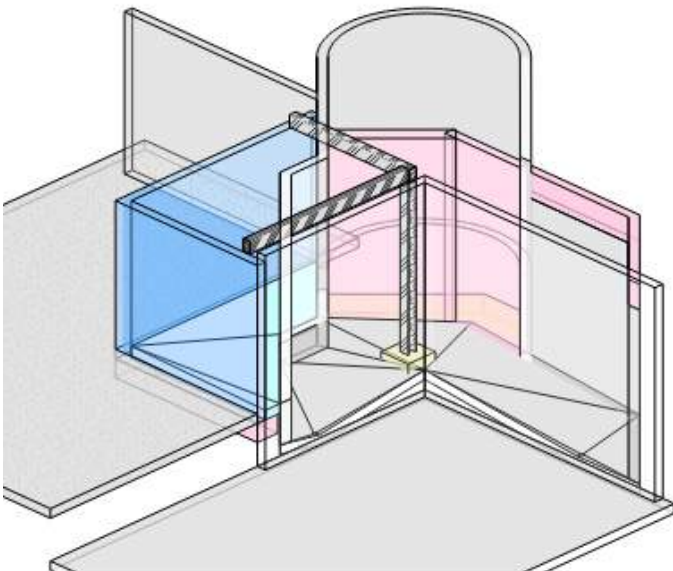
Areas of Work

Latimer Hall Air Intake

Physics Space B18 and Adjacent Rooms

Sitework and Utilities

University Ave down to Pimentel Plaza and Surrounding Area of Existing Air Intake



Latimer Hall - Air Intake Structural Interior Upgrades - Phase 2

Below Grade Foundation

Dates: [02/07/25-02/26/25]

Medium Impact

Steel Column Footings - Vertical Structure

Dates: [02/06/25-03/11/25]

Medium Impact

14" Wall - Vertical Structure

Dates: [02/06/25-03/26/25]

Medium Impact

Sitework & Utilities Work

Soldier Beams - Lift A

Dates: [02/10/25-02/20/25]

Medium Impact

Soldier Beams - Lift B

Dates: [02/21/25-02/26/25]

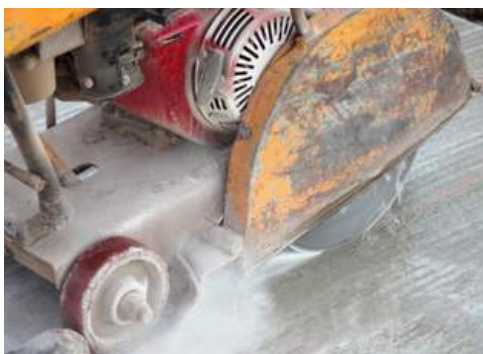
Medium Impact

Tower Crane Micropiles and Tiebacks

Dates: [02/24/25-03/21/25]

Medium Impact

Demolition and Vibration Equipment Being Used (Potential Lab and Equipment Impacts)



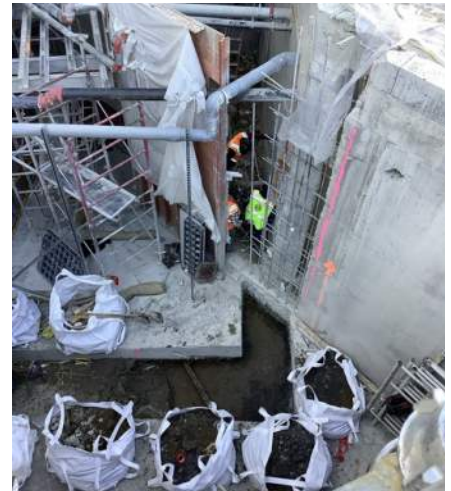
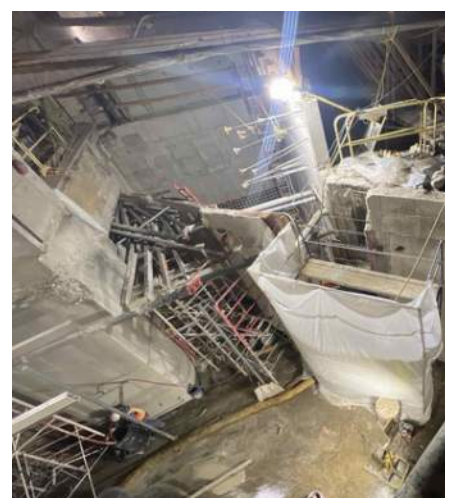
Low Impact



Medium Impact



High Impact



Progress Photos of Air Intakes and Site Utilities

Project Milestones

- Air Intake Relocation - April 2025
- Egress Stairs at Latimer Hall - May 2025
- Lewis and Latimer Connecting Link - May 2025
- Make Ready Phase Complete - August 2025
- Retaining Wall Complete - July 2025
- Start Structural Steel - December 2025
- Start Exterior Facade - January 2026
- Structural Top Out - March 2026
- Exterior Skin Complete - July 2026
- Elevators Operational - September 2026
- Street Improvements Complete - September 2026
- Phase 2 Complete - May 2027

Noise Forecast

- 02/17/25-02/21/25: Noise Level - Medium
- 02/24/25-02/28/25: Noise Level - Medium
- 03/03/25-03/07/25: Noise Level - Medium
- 03/10/25-03/14/25: Noise Level - Medium
- 03/17/25-03/21/25: Noise Level - Medium

Questions or Concerns

Kyle Gibson

Director of Communications

UC Berkeley

(510) 495-5786

Please see the following:

Scheduled Work Near Labs Google Sheet