

# Phase One

## LIFE SAFETY TAGS

FUNCTION OF SPACE	Area Name
AREA	150 SF
OCCUPANCY GROUP	BC Occ. Class
	Occupant Load Area Factor
	Occupant Load

EXIT TO GRADE, HORIZONTAL EXITS	HORIZONTAL EXIT		
	WIDTH	UNIT	CAP.
	33" CLEAR (36" PANEL)	0.27' PERS.	100
	PROPOSED LOAD		OCC

STAIR DESIGNATION	STAIR		
	WIDTH	UNIT	CAP.
	33" CLEAR (36" PANEL)	0.27' PERS.	100
	PROPOSED LOAD		OCC

EGRESS UNIT FACTOR	
CALCULATED EGRESS CAPACITY	

## LIFE SAFETY PLAN LEGEND

	2 HR RATED FIRE & SMOKE BARRIER		SCOPE OF WORK - PHASE 1
	2 HR FIRE RATED CONSTRUCTION		SCOPE OF DEMOLITION - PHASE 2 - MAKE READY
	LEVEL OF EXIT DISCHARGE		MAX TRAVEL TO AN EXIT
	DOOR ASSEMBLY FIRE RATING (IN HOURS)		COMMON PATH OF TRAVEL
	EXIT SIGN / DIRECTION OF TRAVEL		DEAD END

## LIFE SAFETY NOTES

- LATIMER HALL BUILDING OCCUPANCY CLASSIFICATION, MEANS OF EGRESS AND FIRE LIFE SAFETY SYSTEMS MEET THE GROUP H-8 FIRE PROTECTION PROGRAM DATED OCTOBER 1, 1996.
- THE PROPOSED MODIFICATIONS MEET THE GROUP H-8 FIRE PROTECTION PROGRAM.
- NO PERMANENT CHANGE OF OCCUPANCY IS PROPOSED.
- FOR CLARITY OF PLAN, ALL WALLS ARE SHOWING IN WHITE, CALCULATION OF THE AREA WAS TO THE CENTER OF THE WALL.
- PER 903.1.1 SMALL BUILDINGS AND TENANT SPACES: A BUILDING OR TENANT SPACE USED FOR ASSEMBLY PURPOSES WITH AN OCCUPANT LOAD OF LESS THAN 50 PERSONS SHALL BE CLASSIFIED AS A GROUP B OCCUPANCY.
- REFER TO SHEETS G113 TO G116 FOR OCCUPANCY LOAD CALCULATION FOR LATIMER HALL AND G121 FOR LEWIS HALL.
- ALL NEW BALCONY DOORS TO BE 90 MINUTE RATED AND RECEIVE PANIC HARDWARE.



Project  
**HEATHCOCK HALL**  
University Drive  
University of California, Berkeley  
Berkeley, CA 94720

Prepared For  
**Capital Projects**  
1936 University Ave, 2nd Floor  
University of California, Berkeley  
Berkeley, CA 94704

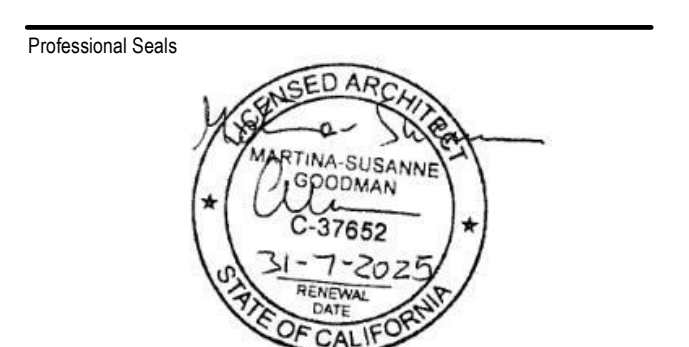


Heilmuth, Obata & Kassabaum, Inc.  
Architecture, Landscape, Lab Planning, Interiors  
One Bush Street, Suite 200  
San Francisco, CA 94104 USA  
t +1 415 243 0555 f +1 415 882 7763

- All reproduction & intellectual property rights reserved © 2023
- In Association with
- Forell Eisesser Engineers Inc.  
Structural Engineer  
160 Pine Street, Suite 600  
San Francisco, CA 94111
  - Vanderweil Engineers Inc.  
Civil Engineers  
274 Summer Street  
Boston, MA 02210
  - Sherwood Design Engineers  
Civil Engineers  
2548 Mission Street  
San Francisco, CA 94110
  - Electright San Francisco  
Lighting Design  
329 Bryant Street, Suite 3B  
San Francisco, CA 94107
  - Syska Hennessy Group  
Vertical Transport  
444 Flower Street, Suite 2000  
Los Angeles, CA 90071
  - GHD  
Code Consultant  
2300 Clayton Road, Suite 920  
Concord, CA 95407
  - Simpson Gumpertz & Heger  
Waterproofing Consultant  
1999 Harrison Street, Suite 2400  
Oakland, CA 94612
  - SRS Safety Services, Inc.  
Window Washing Consultant  
220 Wright Brothers Ave.  
Livermore, CA 94551

Key Plan

LONG	214
LONG	215
BARANGER	212



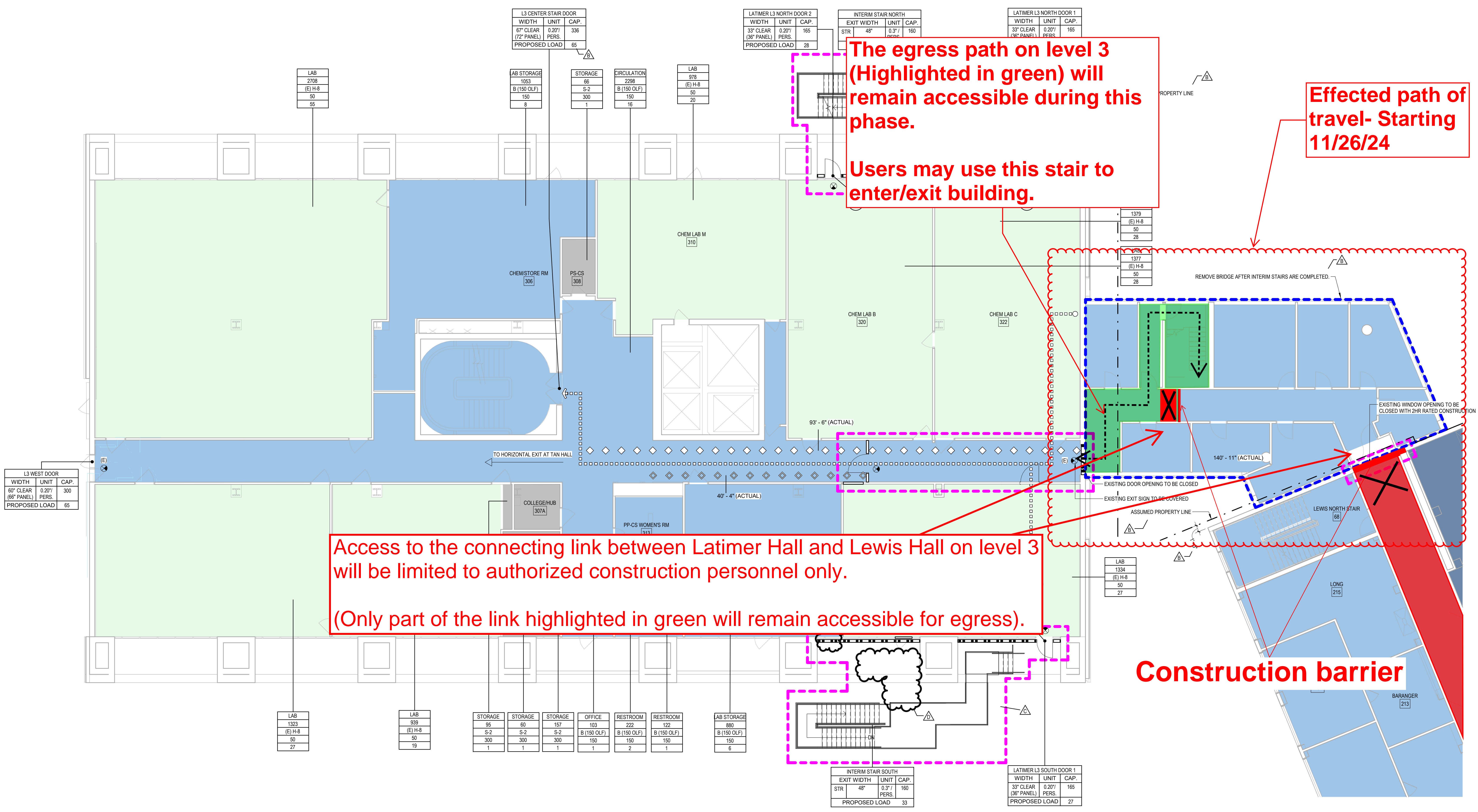
No.	Description	Date
A	Issue History	12-15-2023
B	Make Ready Addendum	04-12-2024
C	Make Ready Addendum REV	04-30-2024
D	Make Ready Addendum REV 4	08-19-2024

Project No:	19_04046_00
Sheet Title:	

LIFE SAFETY PLAN -  
INTERIM STAIR PLANS -  
LEVEL 3

Original is 42" x 30" Do not scale contents of this drawing.  
Sheet Number

G053MR



The egress path on level 3 (Highlighted in green) will remain accessible during this phase.

Users may use this stair to enter/exit building.

Effected path of travel- Starting 11/26/24

Access to the connecting link between Latimer Hall and Lewis Hall on level 3 will be limited to authorized construction personnel only.

(Only part of the link highlighted in green will remain accessible for egress).

Construction barrier

1 PHASE 1 - LATIMER HALL - LEVEL 3  
1/8" = 1'-0"



# Phase One

## SHEET NOTE:

CONSTRUCT THE EXIT PASSAGEWAY WITH LIQUID TIGHT FLOORING ABOVE. REFER TO DETAIL 100-100.

## LIFE SAFETY TAGS

FUNCTION OF SPACE	Area Name
AREA	150 SF
OCCUPANCY GROUP	B (150 OLF)
	Occupant Load Area Tag
	Occupant Load

EXIT TO GRADE, HORIZONTAL EXITS	HORIZONTAL EXIT
	WIDTH UNIT CAP.
	33" CLEAR (36" PANEL) 100
	PROPOSED LOAD OCC

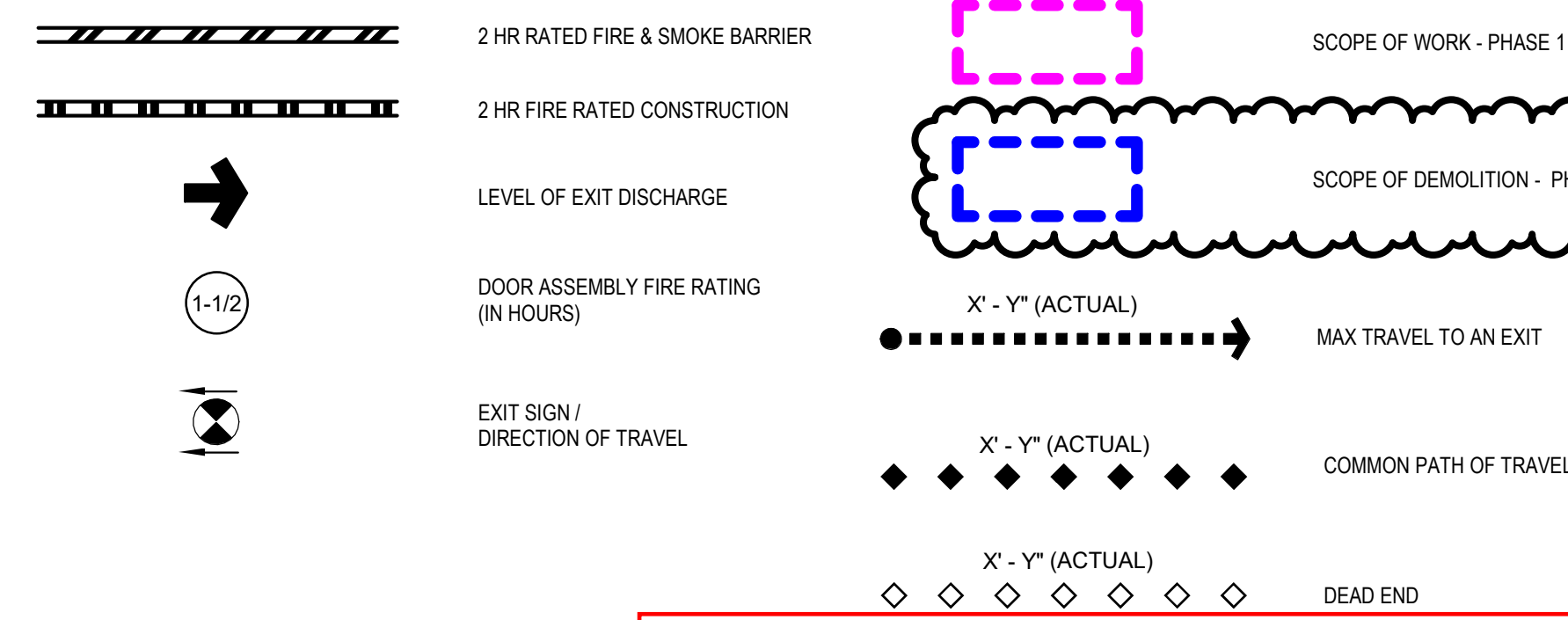
  

STAIR DESIGNATION	STAIR
	WIDTH UNIT CAP.
	33" CLEAR (36" PANEL) 100
	PROPOSED LOAD OCC

EGRESS UNIT FACTOR	
CALCULATED EGRESS CAPACITY	

## LIFE SAFETY PLAN LEGEND



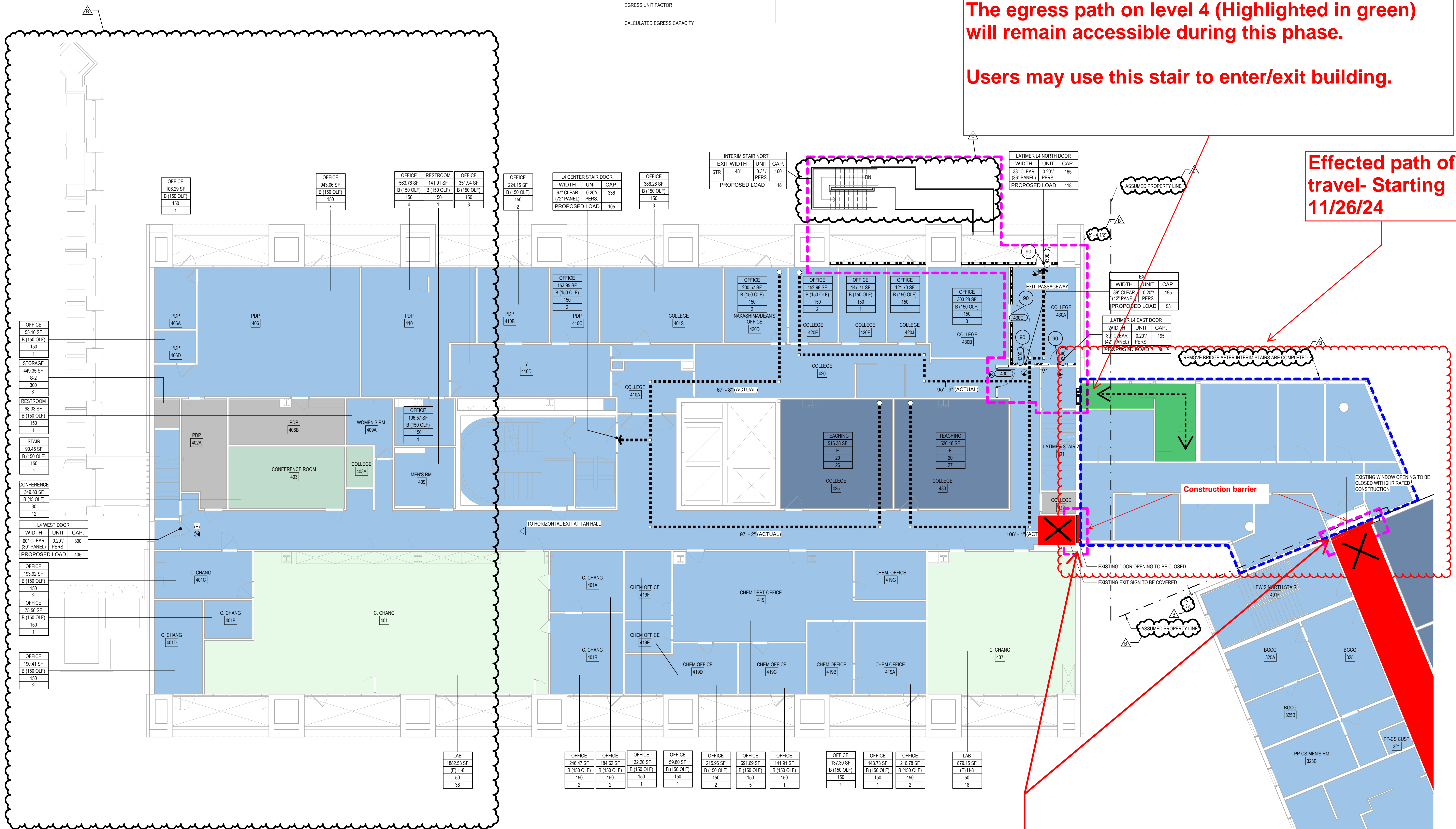
## LIFE SAFETY NOTES

- LATIMER HALL BUILDING OCCUPANCY CLASSIFICATION, MEANS OF EGRESS AND FIRE LIFE SAFETY SYSTEMS MEET THE GROUP H-8 FIRE PROTECTION PROGRAM DATED OCTOBER 1, 1996.
- THE PROPOSED MODIFICATIONS MEET THE GROUP H-8 FIRE PROTECTION PROGRAM.
- NO PERMANENT CHANGE OF OCCUPANCY IS PROPOSED.
- FOR CLARITY OF PLAN, ALL WALLS ARE SHOWING IN WHITE, CALCULATION OF THE AREA WAS TO THE CENTER OF THE WALL.
- PER 303.1.1 SMALL BUILDINGS AND TENANT SPACES, A BUILDING OR TENANT SPACE USED FOR ASSEMBLY PURPOSES WITH AN OCCUPANT LOAD OF LESS THAN 50 PERSONS SHALL BE CLASSIFIED AS A GROUP B OCCUPANCY.
- REFER TO SHEETS 6318 TO 6319 FOR OCCUPANCY LOAD CALCULATION FOR LATIMER HALL AND 6212 FOR LEWIS HALL.
- ALL NEW BALCONY DOORS TO BE 90 MINUTE RATED AND RECEIVE PANIC HARDWARE.

The egress path on level 4 (Highlighted in green) will remain accessible during this phase.

Users may use this stair to enter/exit building.

Effected path of travel- Starting 11/26/24



Access to the connecting link between Latimer Hall and Lewis Hall on level 4 will be limited to authorized construction personnel only.

**Berkeley**  
 Project  
**HEATHCOCK HALL**  
 University Drive  
 University of California, Berkeley  
 Berkeley, CA 94720  
 Prepared For  
**Capital Projects**  
 1936 University Ave, 2nd Floor  
 University of California, Berkeley  
 Berkeley, CA 94704

**h+k**  
 Hellmuth, Obata & Kassabaum, Inc.  
 Architecture, Landscape, Lab Planning, Interiors  
 One Bush Street, Suite 200  
 San Francisco, CA 94104 USA  
 t +1 415 243 0555 f +1 415 882 7763

All reproduction & intellectual property rights reserved © 2023.  
 In Association with  
**Forell Essesser Engineers Inc.**  
 Structural Engineer  
 160 Pine Street, Suite 600  
 San Francisco, CA 94111  
**Vanderweil Engineers Inc.**  
 MIEFP Engineers  
 274 Summer Street  
 Boston, MA 02210  
**Sherwood Design Engineers**  
 Civil Engineers  
 2548 Mission Street  
 San Francisco, CA 94110  
**Electright San Francisco**  
 Lighting Design  
 329 Bryant Street, Suite 3B  
 San Francisco, CA 94107  
**Syska Hennessy Group**  
 Vertical Transport  
 444 Flower Street, Suite 2000  
 Los Angeles, CA 90071  
**GHD**  
 Code Consultant  
 2300 Clayton Road, Suite 920  
 Concord, CA 95607  
**Simpson Gumpertz & Heger**  
 Waterproofing Consultant  
 1999 Harrison Street, Suite 2400  
 Oakland, CA 94612  
**SRS Safety Services, Inc.**  
 Window Washing Consultant  
 220 Wight Brothers Ave.  
 Livermore, CA 94551  
 Key Plan

Professional Seal

No.	Description	Date
A	Issue Ready	12-15-2023
B	Make Ready Addendum	04-12-2024
C	Make Ready Addendum REV	04-30-2024

Project No: 19\_04046.00  
 Sheet Title  
**LIFE SAFETY PLAN - INTERIM STAIR PLANS - LEVEL 4**

Original is 42" x 30" Do not scale contents of this drawing.  
 Sheet Number

**G054MR**